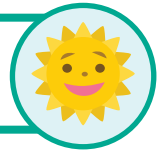




# Haiku How-To



Name: \_\_\_\_\_

Date: \_\_\_\_\_

**Haiku** is a style of Japanese poetry that traditionally describes nature. A haiku poem has *three lines* and *17 syllables*. The first line has five syllables, the second has seven, and the third has five.

Count the syllables in the example below:

An old silent pond.	_____
A frog jumps into the pond--	_____
splash! Silence again.	_____

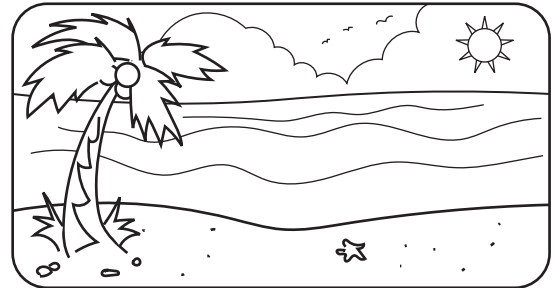
*-Matsuo Basho*

Complete the haiku below by filling in the blanks.  
Remember to count the syllables.

Sun shines on \_\_\_\_\_

A warm breeze blows \_\_\_\_\_

Summer is \_\_\_\_\_



**Now it's your turn! Pick something from nature and describe it using the haiku form. Remember to count the syllables in each line.**

---



---



---